

AUTOMATIC SEWING SYSTEMS

AUTOMATIC U-SEAMING MACHINE
CONNECTED TO THE TOE CLOSER

LC36+TC2



AUTOMATIC SEWING SYSTEMS

LC36+TC2

Automatic U-Seaming machine connected to the Toe Closer. The new pantyhose seaming machine entirely developed and built by Santoni sets very high standards in sewing quality and superior flexibility thanks to the fully electronic control. LC automatically feeds toe closer machine TC2 to complete the sewing process without manual labour.

AUTOMATIC SEWING SYSTEMS

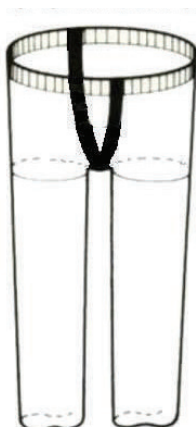
LC36+TC2

Specification	Value
Dimensions	4.000 x 2.700 x 2.100 (h) mm
Sewing heads	Nr. 2 Union Special 9M
Clamps	Nr. 7 - 360 mm
Air pressure	6 bar
Air consumption	480 NI/min
Absorbed power	6,7 Kw
Minimum cycle time	5 Sec.
Max. Production	66 Dz/hr (pair)

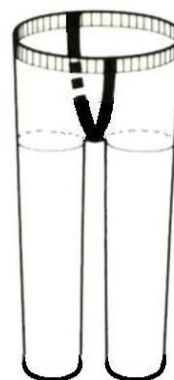
Features
Qty. 7 clamps with solenoid closing system
External electrical rail to operate the clamps makes maintenance easier
Wide clear area around loading station
Single positioning device (SP) for waistband or double positioning device (DP) to correctly align waistband and crotch
Scissors device with inverter motor
New simplified toe closer with fully electronic control
Automatic system to transfer products to the toe closer
Adjustable toes shaping system

Applications: Underwear, Sportswear, Swimwear, Medical Textiles, Technical Textiles.

U-SEAMING



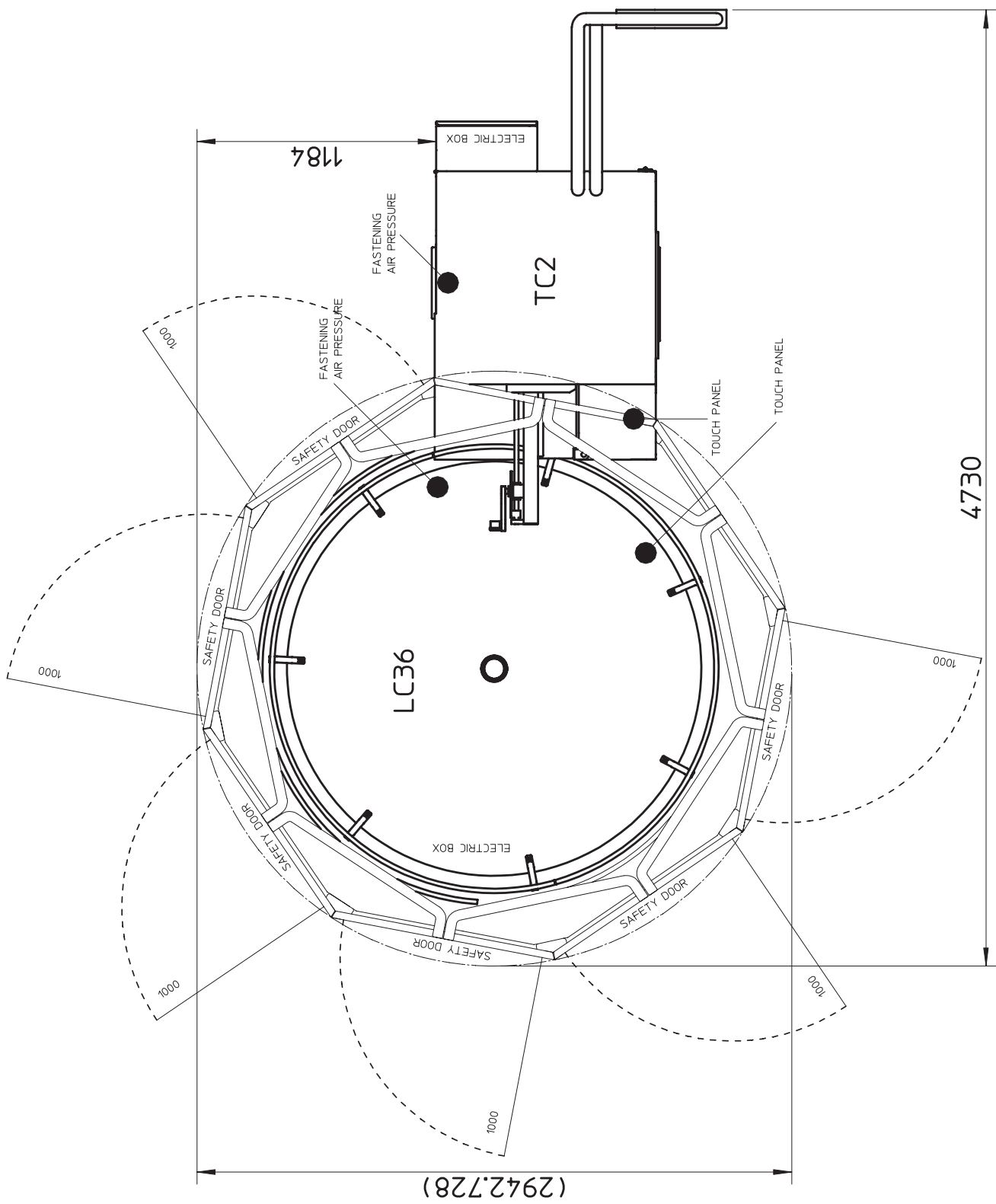
TOE CLOSING



DISCLAIMER:

Technical data given in this brochure are for information only. Santoni S.p.A. reserves the right to modify the machine features without forewarning and without the obligation to apply any modification to the machines already installed. Pictures are exemplifying and have not to be regarded as a reference.

Santoni is recommending needles from
GROZ-BECKERT®





SANTONI SPA

Via Carlo Fenzi, 14 - 25135 Brescia - Italy
Tel. +39 030 37671 Fax +39 030 3767400

P.IVA e CF: IT 00273280172

info.santoni@santoni.com - www.santoni.com